



*Since 1998*

# Gorter

Creek Line Rehabilitation supported by  
SALP and The Ellen Brockman Integrated  
Catchment Group



17 Feb 2020, 09:59:44



# A Degraded Catchment

- Approached by the Land holder in 2020 regarding remediation works on his degraded property.
- Land clearing coupled with a steep gradient lead to extensive erosion in drainage lines and a central water course.
- This initial meeting has lead to on going fencing and revegetation works in the years since, supported by SALP.



10 Mar 2022, 13:04:42



Since 1998

## The Landholder commitment

- The Land holder has committed to fencing off each of the planting areas as the project continues. This is his 'inkind' contribution
- As of 2024, the land holder has completed a total of 1.6km of fencing to protecting newly vegetated areas
- Location: Bindoon, Shire of Chittering Western Australia

## 2021-2022

- The First two years of the project saw works commence in the south Eastern corner of the property.
- Two drainage lines where fenced and subsequently vegetated
- Each year yielded a seedling survival rate of over 75% and begun the process of erosion mitigation.

# 2021-2022



Since 1998



## 2021-2022

- The Following slide depicts each of the 2021 and 2022 revegetation areas. 2021 on the left and 2022 on the right
- Note the good degree of seedling survival in each.



Since 1998

# 2021-2022 Results



# 2023-2024







*Since 1998*

## 2023-2024

- 2023 saw the planting of the third drainage line on the property.
- Once fenced the area was ripped and planted heavily with the goal of slowing erosion off the hill side.
- 2024 aims to plant out the lower section of the main winter creek line through the center of the property.
- Planting the main winter creek line will slow erosion and also provide a significant habitat linkage for wildlife.

# 2023 results, 2024 Goals



Since 1998

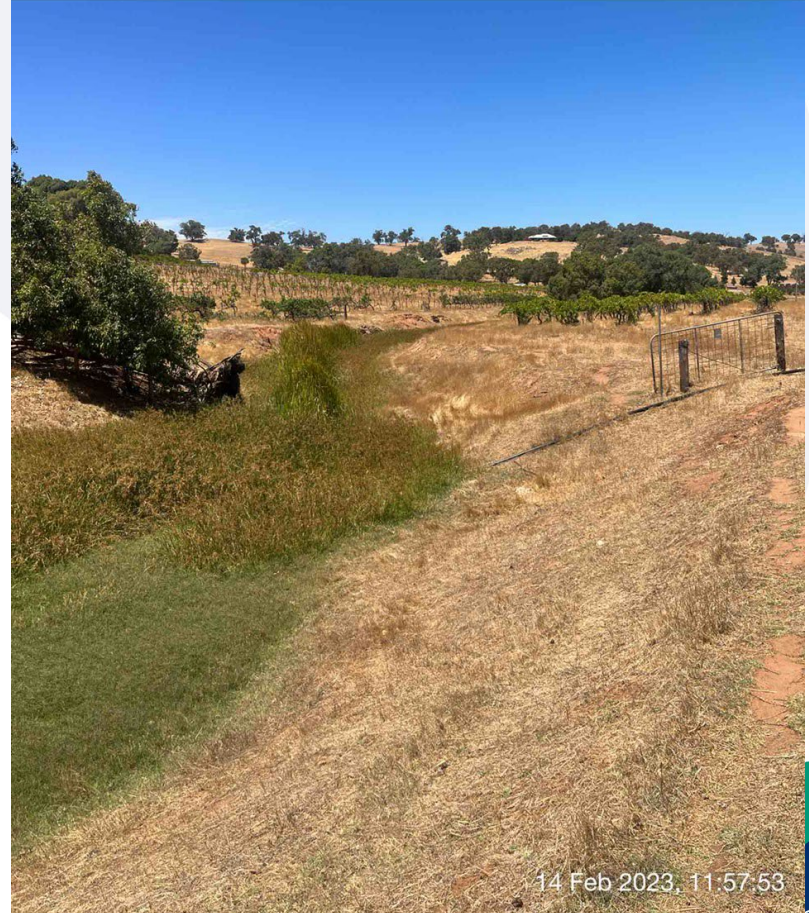


☉ 107°E (T) ● 31°23'21.1"S, 116°6'46.2"E ±19ft ▲ 497ft



## North West Elevation

☉ 157°SE (T) ● 31°23'25.2"S, 116°6'41.2"E ±13ft ▲ 499ft



# Why?



## Why?

- This project area is a small catchment that feeds in to Lake Needoonga and Lake Chittering
- The management of this small catchment helps to protect the significant environmental values of these A class Nature reserves.
- Part of a landscape scale approach to protecting the local environment so that it can be sustained and improved through the generations.